

SEAL:

1	23.MAR.03	NEW ARCH PLAN	SA
2	22.OCT.20	NEW ARCH PLAN/SP/PS/PH/3-13	SA
3	21.OCT.14	ISSUED FOR CP	RJ

NO. DATE REVISION DESCRIPTION DR.

CLIENT:

PROJECT:

MINT CONDOMINIUM DEVELOPMENT
6340 McRobb Avenue
Nanaimo, BC

DRAWING TITLE:

PHASE 2 NORTH LANDSCAPE PLAN

DATE: 18.NOV.07 DRAWING NUMBER:

SCALE: 1/16" = 1'-0"

DRAWN: RJ

DESIGN: RJ

CHKD: PCM

L1

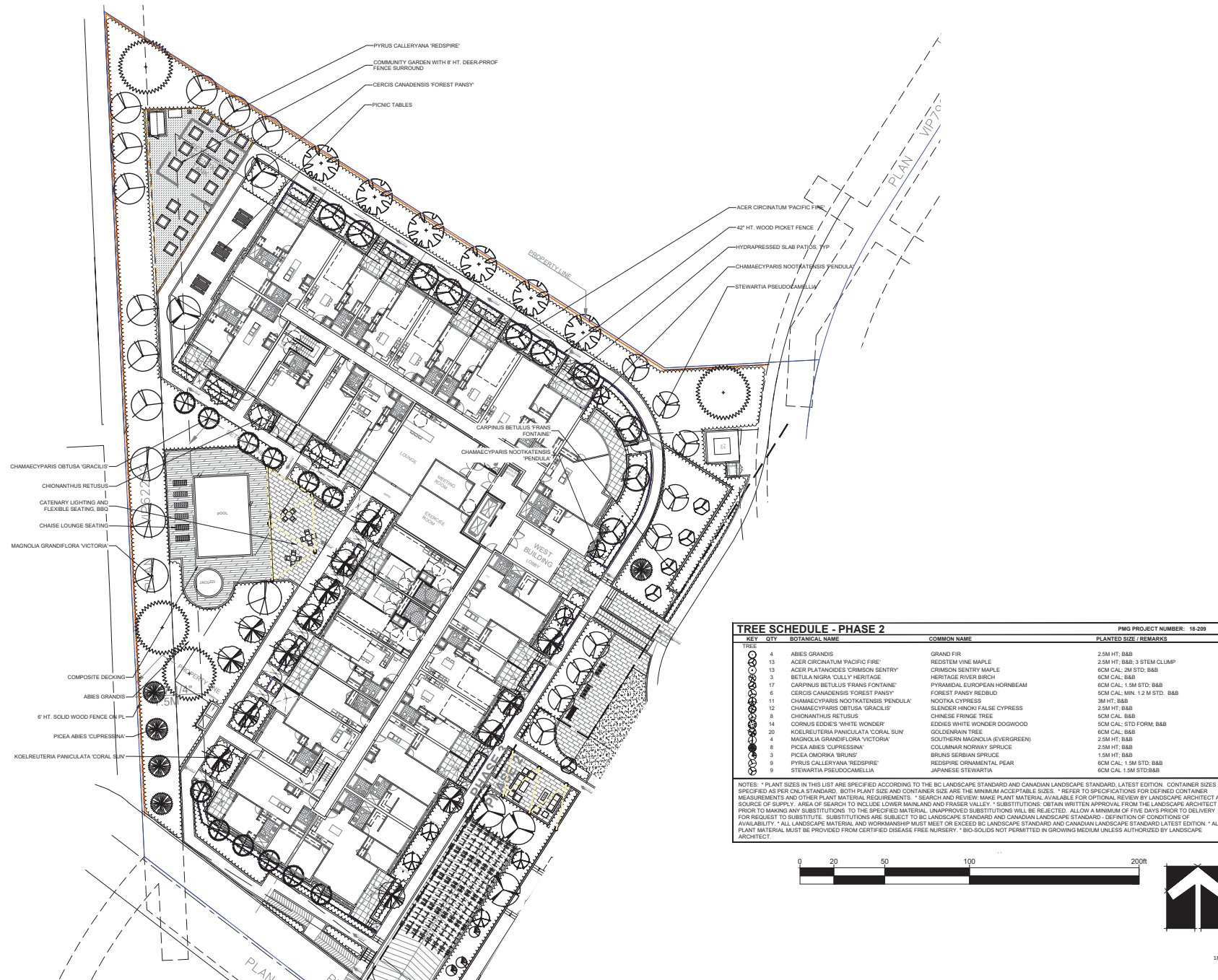
OF 10

18209-14.2P

PMG PROJECT NUMBER:

18-209

RECEIVED
DP1260
2023-MAR-03
Current Planning



TREE SCHEDULE - PHASE 2		PMG PROJECT NUMBER: 18-209	
QTY	BOTANICAL NAME	COMMON NAME	PLANTED SIZE / REMARKS
4	ABIES GRANDIS	GRAND FIR	2.5M HT. B&B
13	ACER CIRCINATUM PACIFIC FIRE	REDSTEM VINE MAPLE	2.5M HT. B&B 3 STEM CLUMP
13	ACER PLATANOIDES 'CRIMSON SENTRY'	CRIMSON SENTRY MAPLE	6CM CAL. 2M STD. B&B
3	BETULA NIGRA 'LALLY HERITAGE'	HERITAGE RIVER BIRCH	6CM CAL. B&B
17	CARPINUS BETULUS 'FRANS FONTAINE'	FRANZ'S EUROPEAN HORNBEAM	6CM CAL. 1.5M STD. B&B
6	CERCIS CANADENSIS 'FOREST PANSY'	FOREST PANSY REDBUD	5CM CAL. MN. 1.2 M STD. B&B
11	CHAMAECYPARIS NOOTKATENSIS 'PENDULA'	NOOTKA CYPRESS	3M HT. B&B
12	CHAMAECYPARIS OBTUSA 'GRACILIS'	SLENDER HINOKI FALSE CYPRESS	2.5M HT. B&B
8	CHONANTHUS RETUSUS	CHINESE FRINGE TREE	5CM CAL. B&B
14	CORNUS EDDIE'S 'WHITE WONDER'	EDDIE'S WHITE WONDER DOGWOOD	5CM CAL. STD FORM. B&B
20	KOELREUTERIA PANICULATA 'CORAL SUN'	GOLDENRAIN TREE	6CM CAL. B&B
4	MAGNOLIA GRANDIFLORA 'VICTORIA'	SOUTHERN MAGNOLIA (EVERGREEN)	2.5M HT. B&B
8	PICEA ABIES 'CUPRESSINA'	COLLIANAR NORWAY SPRUCE	2.5M HT. B&B
3	PICEA CANADICA 'BRUNO'	BRUNO'S SCISSOR SPRUCE	1.5M HT. B&B
9	PYRUS CALLERYANA 'REDSPIRE'	REDSPIRE ORNAMENTAL PEAR	6CM CAL. 1.5M STD. B&B
9	STEWARTIA PSEUDOCAMELLIA	JAPANESE STEWARTIA	6CM CAL. 1.5M STD. B&B

NOTES: * PLANT SIZES IN THIS LIST ARE SPECIFIED ACCORDING TO THE BC LANDSCAPE STANDARD AND CANADIAN LANDSCAPE STANDARD, LATEST EDITION. CONTAINER SIZES SPECIFIED AS PER CNA STANDARD. BOTH PLANT SIZE AND CONTAINER SIZE ARE THE MINIMUM ACCEPTABLE SIZES. * REFER TO SPECIFICATIONS FOR DEFINED CONTAINER MEASUREMENTS AND OTHER PLANT MATERIAL REQUIREMENTS. * SEARCH AND REVIEW MAKE PLANT MATERIAL AVAILABLE FOR OPTIONAL REVIEW BY LANDSCAPE ARCHITECT AT SOURCE OF SUPPLY. AREA OF SEARCH TO INCLUDE LOWER MAINLAND AND FRASER VALLEY. * SUBSTITUTIONS OBTAIN WRITTEN APPROVAL FROM THE LANDSCAPE ARCHITECT PRIOR TO MAKING ANY SUBSTITUTIONS TO THE SPECIFIED MATERIAL. UNAPPROVED SUBSTITUTIONS WILL BE REJECTED. ALLOW A MINIMUM OF FIVE DAYS PRIOR TO DELIVERY FOR REQUEST TO SUBSTITUTE. SUBSTITUTIONS ARE SUBJECT TO BC LANDSCAPE STANDARD AND CANADIAN LANDSCAPE STANDARD, DEFINITION OF CONDITIONS OF AVAILABILITY. * ALL LANDSCAPE MATERIAL AND WORKMANSHIP MUST MEET OR EXCEED BC LANDSCAPE STANDARD AND CANADIAN LANDSCAPE STANDARD LATEST EDITION. * ALL PLANT MATERIAL MUST BE PROVIDED FROM CERTIFIED DISEASE FREE NURSERY. * BIO-SOLIDS NOT PERMITTED IN GROWING MEDIUM UNLESS AUTHORIZED BY LANDSCAPE ARCHITECT.

